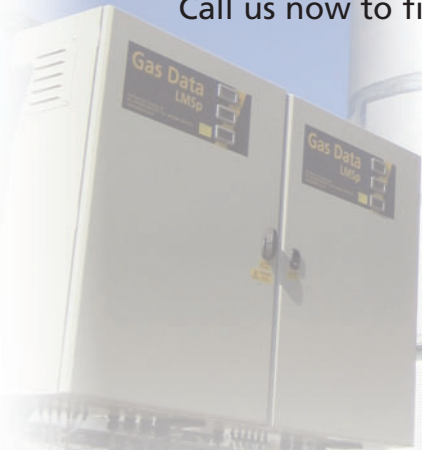


## Industrial and Environmental Instrumentation System

Measure on site, view results from anywhere in the world!

A multi-channel, multifunction instrumentation system. Use the power of the Internet to monitor and control site conditions from your computer or mobile phone. Call us now to find out more about Gas Data's remote monitoring network.



### Typical Applications

- CHP performance
- Anaerobic digester performance
- Biogas/Landfill gas monitoring
- Environment Agency Compliance monitoring

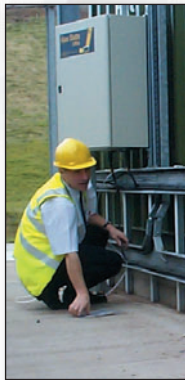


### Features

- 7 configurable gas channels
- 3 pressure, 2 temperature, 1 flow channel
- Universal inputs/outputs
- Alarms sent by Email or Text message

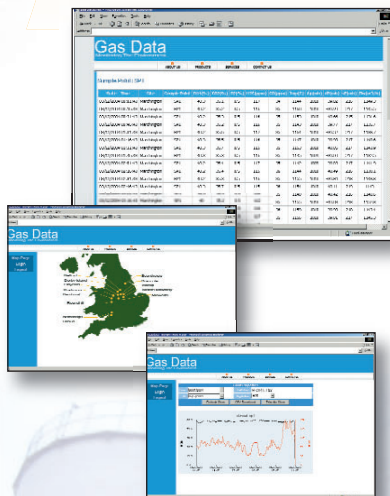
### Installation

Gas Data staff always carry out system commissioning and most installation work is done the same way. On some projects trained and approved subcontract electrical and mechanical engineering companies carry out the work closely supervised by a Gas Data project engineer



### Sample Points

These can be up to 100m from the main cabinet. They can be configured to sample gas, pressure, flow or any combination.



### www.GasData.net

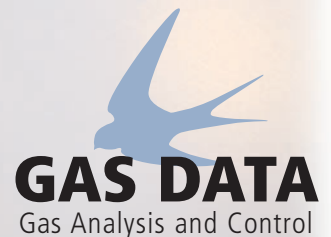
Customers are each allocated their own private secure data area on this web site. From here any of their web-enabled instruments can be interrogated. Different access levels are given to managers, engineers and operators.



Gas Data Limited, Pegasus House, Seven Stars Estate  
Wheler Road, Whitley, Coventry CV3 4LB U.K.

Telephone: +44 (0) 2476 303311  
Fax: +44 (0) 2476 307711

E-mail: [enquiries@gasdata.co.uk](mailto:enquiries@gasdata.co.uk)  
Website: [www.gasdata.co.uk](http://www.gasdata.co.uk)



### Other products available from Gas Data



GFM100 - Single and multiple gas analyser



GFM200 - Stowaway detection



GFM400 - Biogas and landfill gas analysers



GFM600 - Pressure and flow analyser



LMSxi - Contaminated land and landfill gas analyser



LMSr - Temporary data logging systems



Combimass - Gas flow monitoring